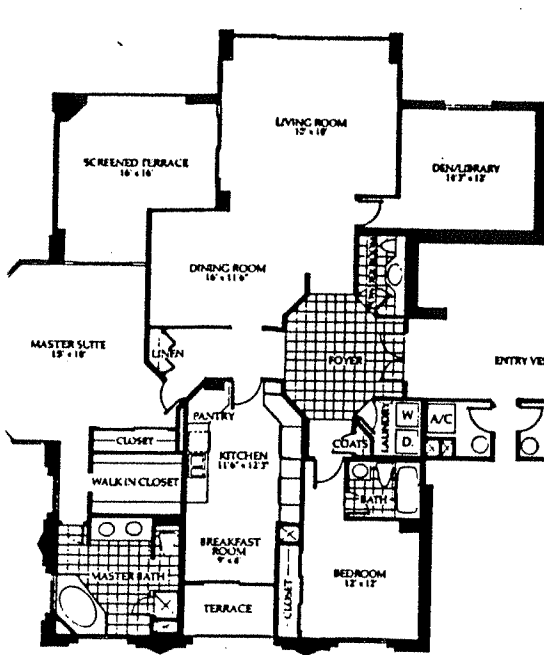
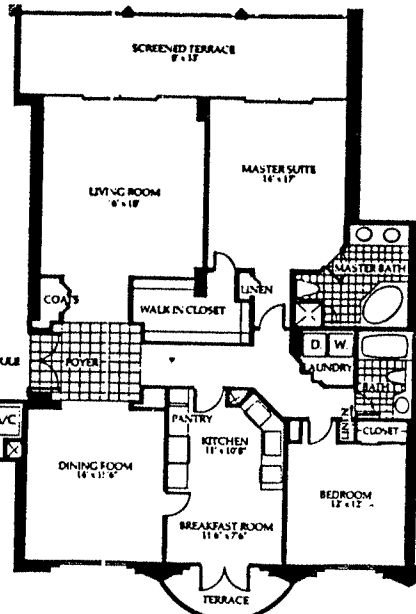


SOUTHWEST GULFVIEW



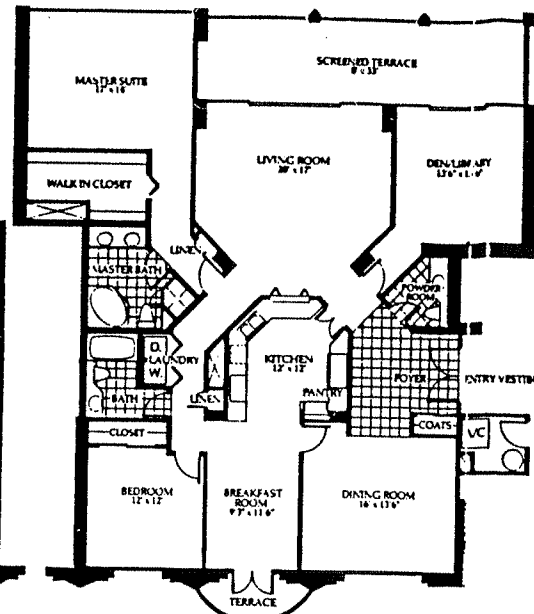
RESIDENCE PLAN A
TWO BEDROOM/DEN/TWO AND A HALF BATH

A/C LIVING	2062
TERRACES	273
TOTAL	2337



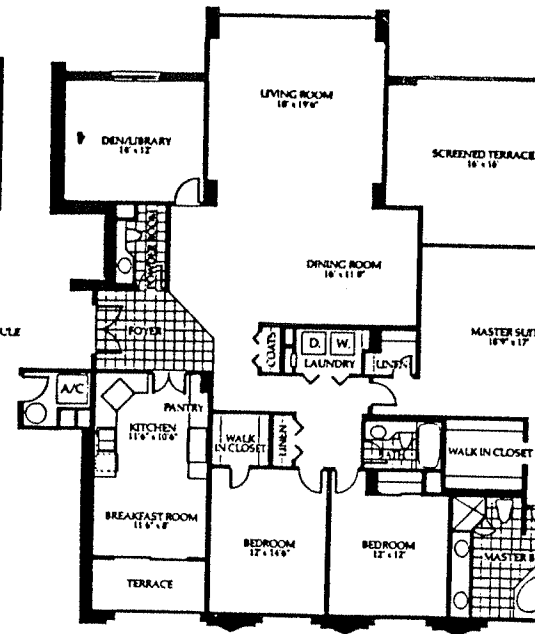
RESIDENCE PLAN B
TWO BEDROOM/TWO BATH

A/C LIVING	1749
TERRACES	325
TOTAL	2074



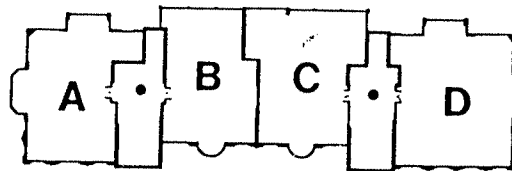
RESIDENCE PLAN C
TWO BEDROOM/DEN/TWO AND A HALF BATH

A/C LIVING	2153
TERRACES	325
TOTAL	2478



RESIDENCE PLAN D
THREE BEDROOM/DEN/TWO AND A HALF BATH

A/C LIVING	2500
TERRACES	358
TOTAL	2858



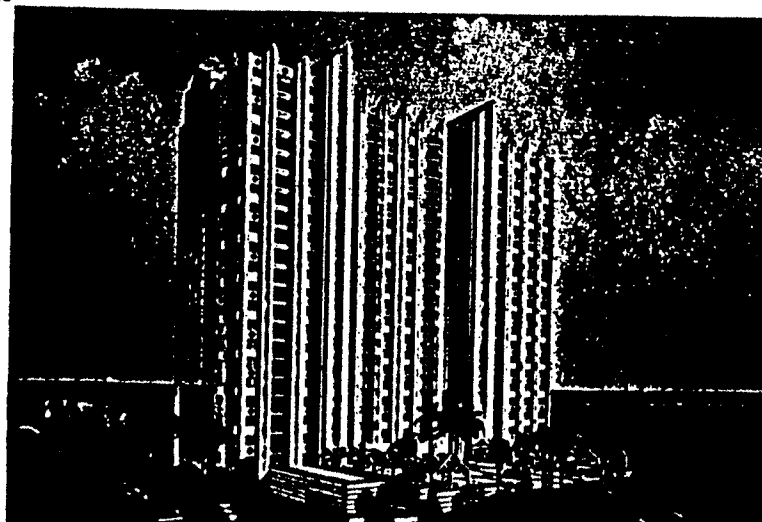
• High-speed elevators, opening onto your private vestibule for only two residences.

Your life in The Claridge will be shared by the fortunate few who will reside within the private walled enclave of five-plus acres surrounded by natural hardwood tropical preserves and with a wealth of amenities such as:

- Four high-speed elevators; opening onto your private vestibule shared by only two residences.
- Oversized terrace, pool deck and spa with large heated pool, enhanced with lush landscaping.
- Chauffeur-Driven tram takes you from your door through magnificent mangrove preserves to the Gulf and Pelican Bay Beach facilities.
- Optional poolside air-conditioned cabanas.
- Secure garage parking, each residence.
- Multi-purpose community club room.
- Health club with locker rooms and saunas.
- Stately library and media room with large screen T.V., V.C.R. and facsimile machine.
- Private card room.
- Two furnished guest suites.
- Bicycle storage area with air compressor.

RESIDENCE FEATURES

- Spacious "thru-view" floor plans.
- Oversized screened terrace overlooking the Gulf.
- Private terrace overlooking the golf course.
- Ceramic tile in foyer, kitchen and breakfast room.
- Separate laundry room with full size washer and dryer.



- Built in wet bar.
- Spacious morning room.
- European style cabinetry, wood or mica.
- "Corian" counter tops and back splash.
- Pantry closets in all kitchens.
- G.E. designer series, white on white appliances.
- Roman tub with whirlpool.
- Separate stall shower.
- Double sink vanities, cultured marble tops.
- Kohler "San Raphael" one-piece water closets.
- Mirrors and make-up lighting over vanities.

THE ABOVE SPECIFIED ITEMS ARE SUBJECT TO TIMELY AVAILABILITY. THE DEVELOPER RESERVES THE RIGHT TO SUBSTITUTE MATERIALS, EQUIPMENT AND APPLIANCES OF EQUAL OR SUPERIOR QUALITY.


The Claridge
 AT PELICAN BAY
